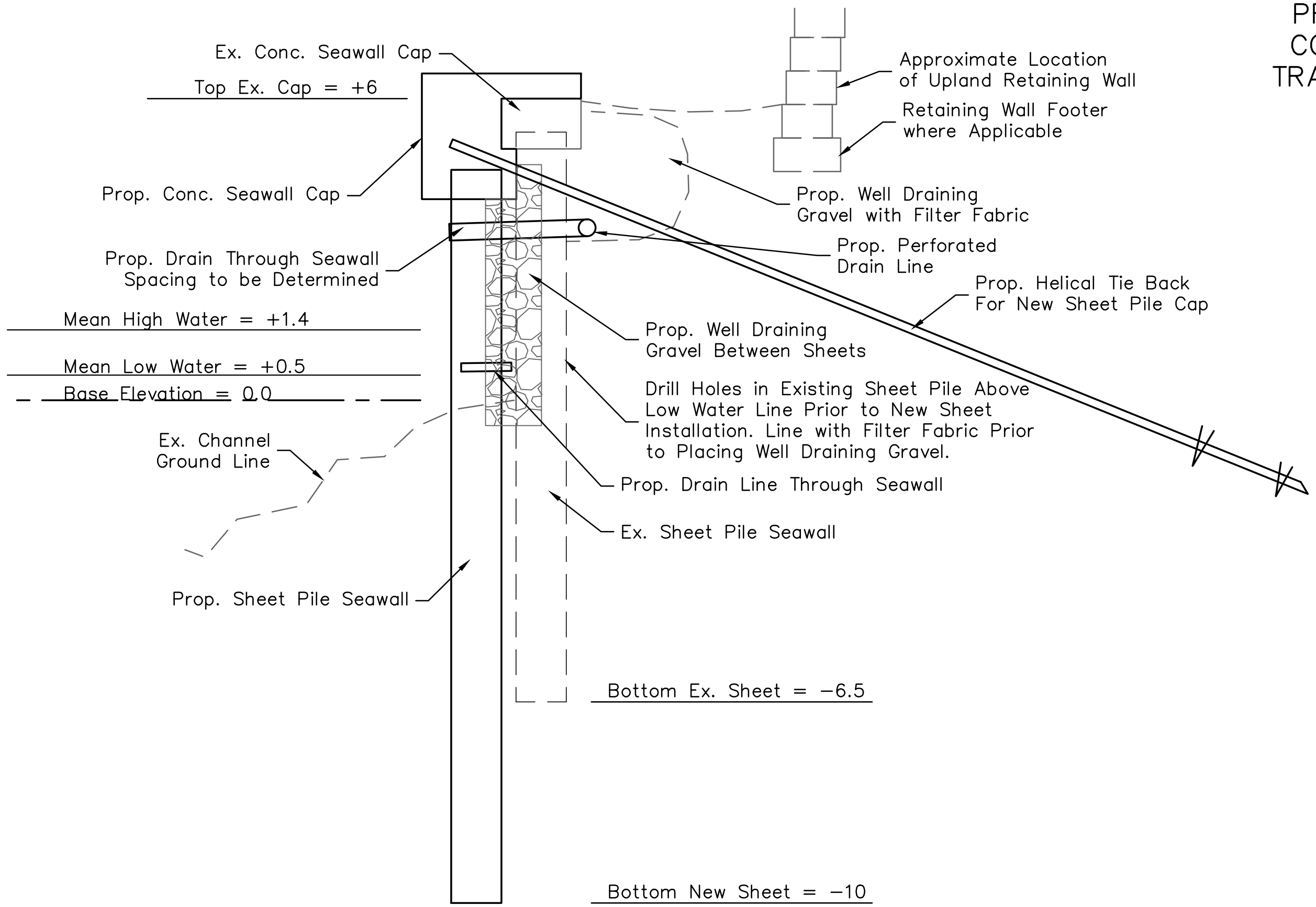


FOUO
 PROPRIETARY
 CONFIDENTIAL
 TRADE SECRET



Prop. Sheet Pile Wall
 Scale: 1/2" = 1'-0"

KENNETH E. SANDS, PE
 FLORIDA REGISTRATION# 77909
 4511 NORTH HIMES AVE, SUITE 200
 TAMPA, FLORIDA 33614
 CELL: 941-886-4343
 KEN@FOUNDATIONMASTERS.COM

FOUNDATION MASTERS, LLC
 FOUNDATION & STRUCTURAL SPECIALISTS
 CBC# 1251806 CoA# 30969
 4511 NORTH HIMES AVE, SUITE 200
 TAMPA, FLORIDA 33614
 PH: 813-618-5272

Project:
 Preliminary Seawall Repair
 Mira Bay Community
 Apollo Beach, Florida

Issued for:
 CDD Bd Meeting
 4/20/17

SHEET TITLE
 Details

PROJECT NO
 --

SHEET NO
 S4

DO NOT SCALE DRAWINGS PLANS CONFORM TO FLORIDA BUILDING CODE - 5TH EDITION (2014)